

Collection Futura 2018-2021: Special Superdurable Finishes



Collection Futura 2018-2021

Why choose high durability?

Superdurable products have excellent weathering durability compared to standard durability products, so the aesthetics of a building will last longer.

- Gloss retention and color stability of the coating are far superior to standard durability coatings.
- Chalking is limited compared to standard durability systems.
- Superdurable powders meet Qualicoat Class 2, GSB Master and AAMA 2604.

Collection Futura 2018-2021 is developed together with leading trend, design and innovation consultants, PeclersParis, and is covered by our Global Gold Warranty* (subject to conditions).

AkzoNobel has the longest Track Record in Superdurable Technology.

Collection Futura is Sustainable

AkzoNobel is the first major powder coatings manufacturer to achieve a third-party certified Environmental Product Declaration (EPD) for its coatings.

An EPD includes a life-cycle analysis of the raw materials used in the product, manufacture of the product itself, shipping to the customer and application.

For each stage, the carbon output, acidification of water, water usage and other elements are measured. Our EPD has been verified as accurate by a third-party examiner.

For more information about our EPD, or to receive a copy, ask your local AkzoNobel Powder Coatings representative or visit your local Interpon website.

为何要选择耐久度高的产品？

超耐久性产品与普通耐久产品相比具有优异的耐候性，因此建筑的美观度将保持更长时间。

- 涂层的光泽保持性和颜色稳定性远远优于普通耐久涂料。
- 与普通耐久性体系相比，粉化发生的概率很低
- 超耐久粉末符合Qualicoat Class 2, GSB Master 和 AAMA 2604 的标准

Futura 2018-2021系列是与引领趋势的设计和创新顾问公司 PeclersParis共同开发，并符合我们的全球黄金质保标准*(受条件限制)

阿克苏诺贝尔在超耐久技术方面拥有最长的案例追踪记录

Futura系列的可持续发展性

阿克苏诺贝尔是第一家获得第三方认证环境产品声明 (EPD) 的主要粉末涂料制造商。

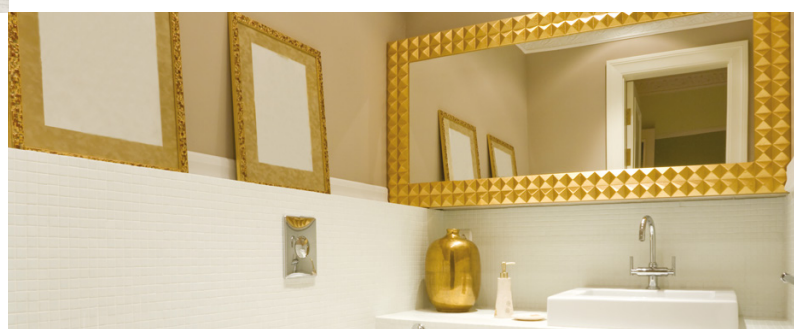
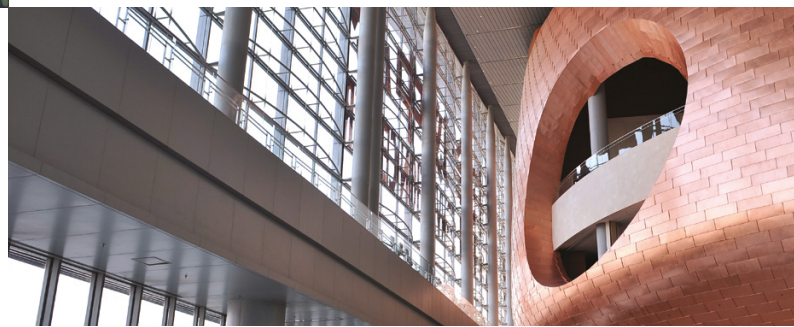
EPD 涵盖对产品使用的原材料、产品生产制造、运输过程以及客户端应用的整个生命周期分析。

针对每个阶段测量碳输出，水的酸化程度，用水量等多方面因素，我们的 EPD 已被第三方验证为正确无误。

有关我们 EPD 的更多信息，或需要寻求一份副本，请咨询当地的阿克苏诺贝尔粉末涂料业务代表或访问您当地的Interpon网站。

* Global Gold Warranty = 20/25 years.
Regional variations apply; contact us for details.

* 全球黄金质保= 20/25年
区域间存在差异，详询当地机构



Superdurable powder coatings
for architectural metalwork



Interpon D2000 体系： 成熟案例追踪记录

项目： 加利福尼亚Mission医院
喷涂年份： 1991

我们的承诺：

建筑上15年色彩质保
保证保持其50%的光泽 - 佛罗里达5年

更新：

2012年检查
21年历史

结果：

颜色变化 DE = 3
光泽保持 59%

Interpon D2000 series: A proven Track Record

Project: Mission Hospital, California
Coated: 1991

Our Promise:

15-year Color Warranty on building
Guaranteed to maintain 50% of its gloss - 5 years Florida

Update:

Inspected 2012
21 Years old

Result:

Color change DE = 3
Gloss retention 59%

Project: The Bridgewater Hall, Manchester
Coated: 1996

Our Promise:

15-year Color Warranty on building
Guaranteed to maintain 50% of its gloss - 5 years Florida

Update:

Inspected 2017
21 Years old

Result:

Color change minimal
Gloss retention >50%

项目： 曼彻斯特Bridgewater大厅
喷涂年份： 1996

我们的承诺：

建筑上15年色彩质保
保证保持其50%的光泽 - 佛罗里达5年

更新：

2017年检查
21年历史

结果：

颜色变化极小
光泽保持 >50%



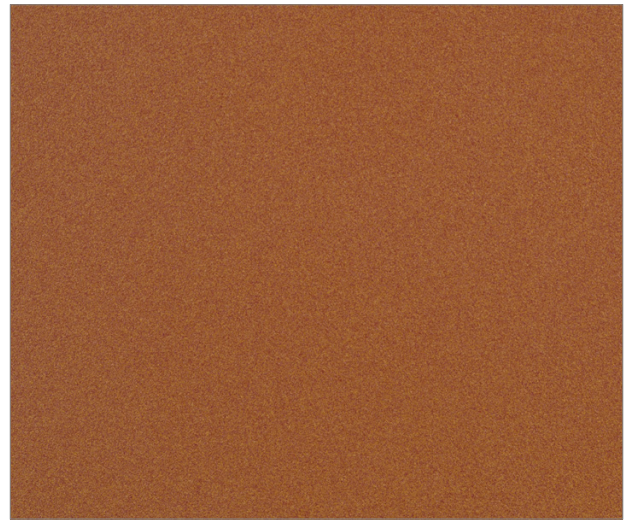


Wild Nature

A new approach to "green" trends exploring a more primitive, wild expression of nature.

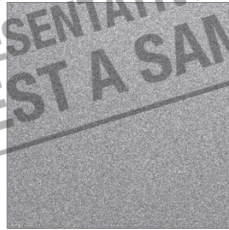
A dense range of colors, with mineral and vegetable influences; earthy browns, peaty khakis, anthracite greys and charcoal blacks. Textures and effects are matt, patina, grainy, oxidized, or blurry amalgamated finishes.

**COLORS ARE REPRESENTATIVE ONLY
PLEASE REQUEST A SAMPLE**



Tanami Sablé

Y4304I



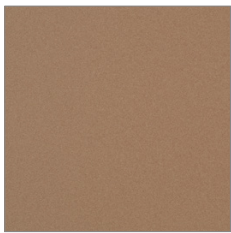
Starlight 2525 Sablé
YX353F



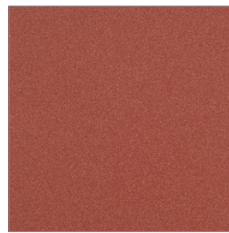
Bohol
Y2212I



Bleu 2600 Sablé
YW361F



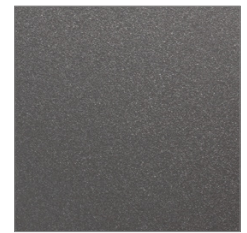
Djibouti Sablé
Y4307I



Sequoia Sablé
Y4308I



Cappadoce 2525
YW268I



Gris 2900 Sablé
YW355F



Mars 2525 Sablé
YX355F



Patah 2525
YW267I



Innoko Sablé
Y4306I



Brun 2650 Sablé
YW366F



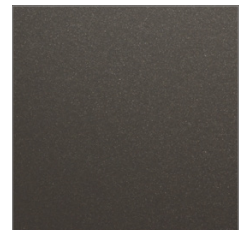
Bronze 2525
YW283F



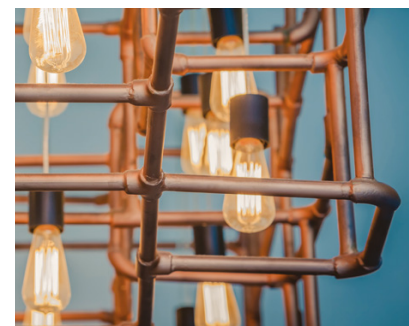
Tijuka Sablé
Y2306I



Manganese 2525
YW280F



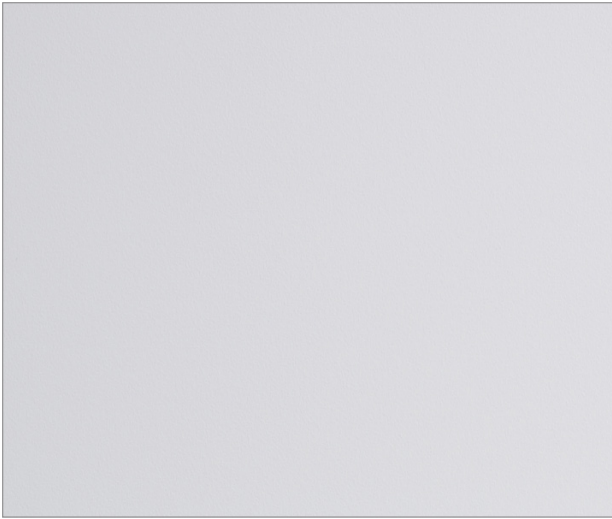
Platine 2525
YW284F





Time Out

To offset frenzied urban routines, we look to reconnect with the elements, to choose soothing living spaces designed with sustainable materials, capable of providing a sense of wellbeing. We move towards a range of light tones based on colored whites and softened neutrals, inspired by nature. Textures are matt or satiny, with a sort of frosted shine.

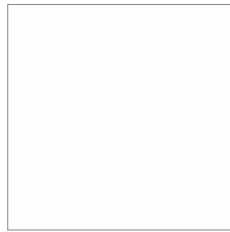


Sanctum Silky Texture

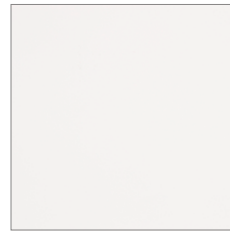
YL317I



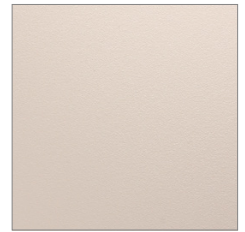
Grazalema 2525
YW266F



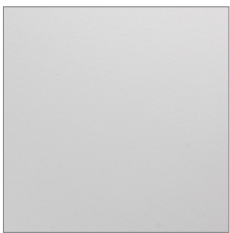
Cotton
YA406I



Detendre
Y2214I



Yazd 2525 Sablé
YW370F



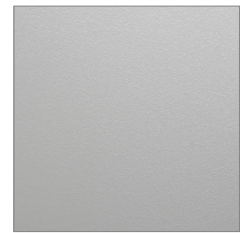
Faro 2525
YW268F



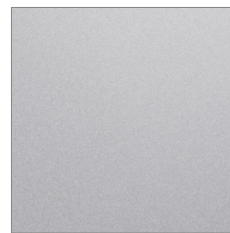
Gris 2800 Sablé
YW356F



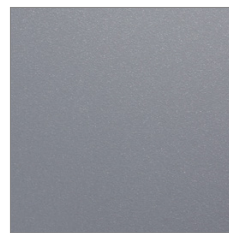
Senoual 2525
YW266I



Gris 2150 Sablé
YW365F



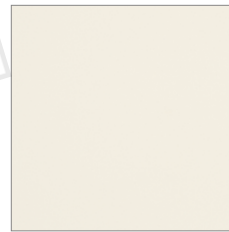
Galet 2525
YX050F



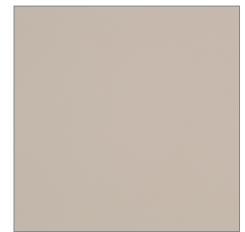
Gris 2400 Sablé
YW373F



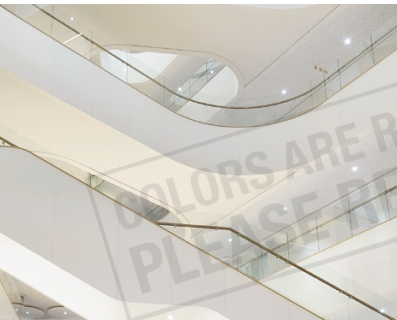
Gris 2500 Sablé
YW358F



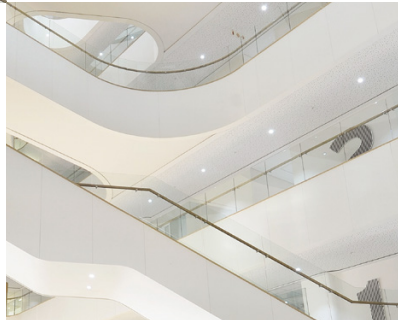
Ostuni
Y2211I



Oia Silky Texture
YL316I



COLORS ARE REPRESENTATIVE ONLY
PLEASE REQUEST A SAMPLE



The codes on this card relate to **Interpon D2000** series. Colors indicative only. Actual product may differ slightly. Please request a sample.



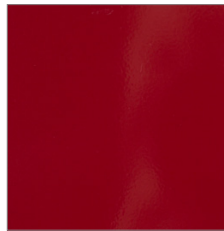
Brisbane Sablé

Y2303I

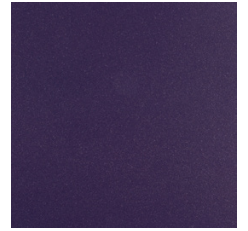
Glam City

Modernist influences and baroque trends are back, but the mood is more sophisticated and precious.

The inspiration today is intense, dark tones, centered on reds, blues and greens, in deep and sumptuous nuances. Textures are satiny or shiny, sequined or blackened reflections.



Rio
Y2001I



La Boca Silky Texture
Y2305I



Noir 2300 Sablé
YW383I



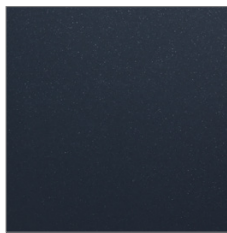
Noir 2200 Sablé
YW360F



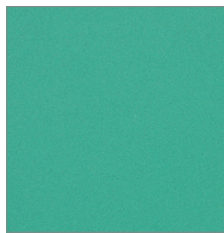
Chennai
Y2213I



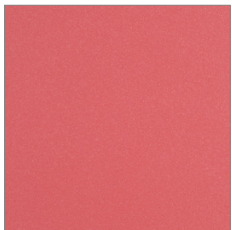
Noir 2100 Sablé
YW359F



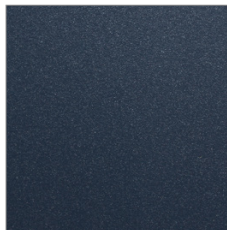
Canon 2525
YW279F



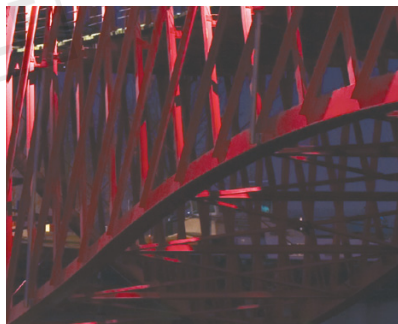
Raja Sablé
Y4309I



Jaipur Sablé
Y2361I



Bleu 2700 Sablé
YW353F



COLORS ARE REPRESENTATIVE ONLY
PLEASE REQUEST A SAMPLE



Treasured Light

Following an overdose of bling, sensual and more refined versions of metallic brilliance are the new must have.

A range of metallic nuances, including brass, pink gold, pale copper and silver. Luminous textures with delicate brilliance, an anodized effect, discretely shimmering, brushed or with softly chromed reflections.

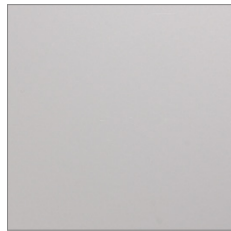


Aurora

Y2000I



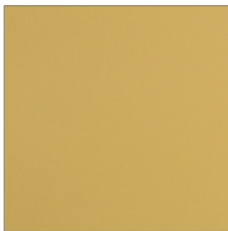
Ambre 2525 Sablé
Y2316F



Silver 2525
YW206F



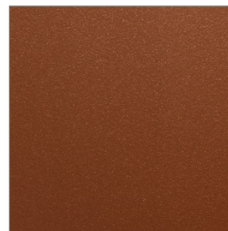
Tasilaq Sablé
Y2304I



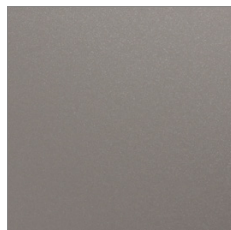
Antu
Y2209I



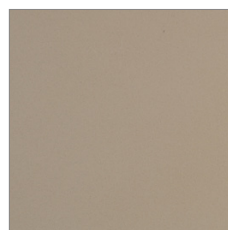
Gondar 2525
YW106I



Ordos 2525 Sablé
YW387I



Pyrite 2525
YW207F




Sumela
Y2208I

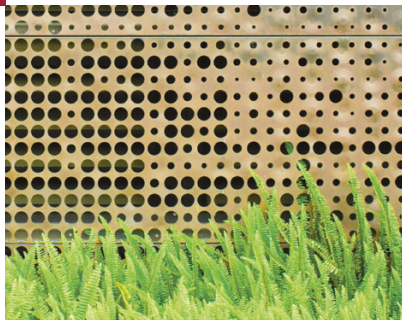


For further information or to order a sample panel, speak to your local representative or scan the QR code.

Collection Futura 2018-2021

 Follow AkzoNobel Powder Coatings on Facebook

For more information visit www.interpon.com or speak to your local representative.



下载我们的应用程序

我们的应用程序“建筑U选色”，专为建筑指定者和设计师的使用而设计

- 上传图像以找到匹配的涂层颜色
- 查看金属表面涂层的技术信息
- 准备指定规范
- 访问完整、准确、最新的涂料信息
- 从 iPad 上直接下载数据

Download our app

Our app, AkzoNobel Design, has been created especially for use by architectural specifiers and designers.

- Upload images to find matching coatings
- View technical information for coatings on metal
- Prepare bespoke specifications
- Access complete, accurate, up-to-date information on coatings
- Download data straight to your iPad



Interpon objects available in several languages;
www.polantis.com/akzonobel

Interpon®

All products supplied & technical advice given are subject to the standard terms of sale of the AkzoNobel supplying company. Copyright ©2017 Akzo Nobel Powder Coatings Ltd. Interpon is a registered trademark of AkzoNobel. (Issue 1 - 9/2017). Printed in Italy.